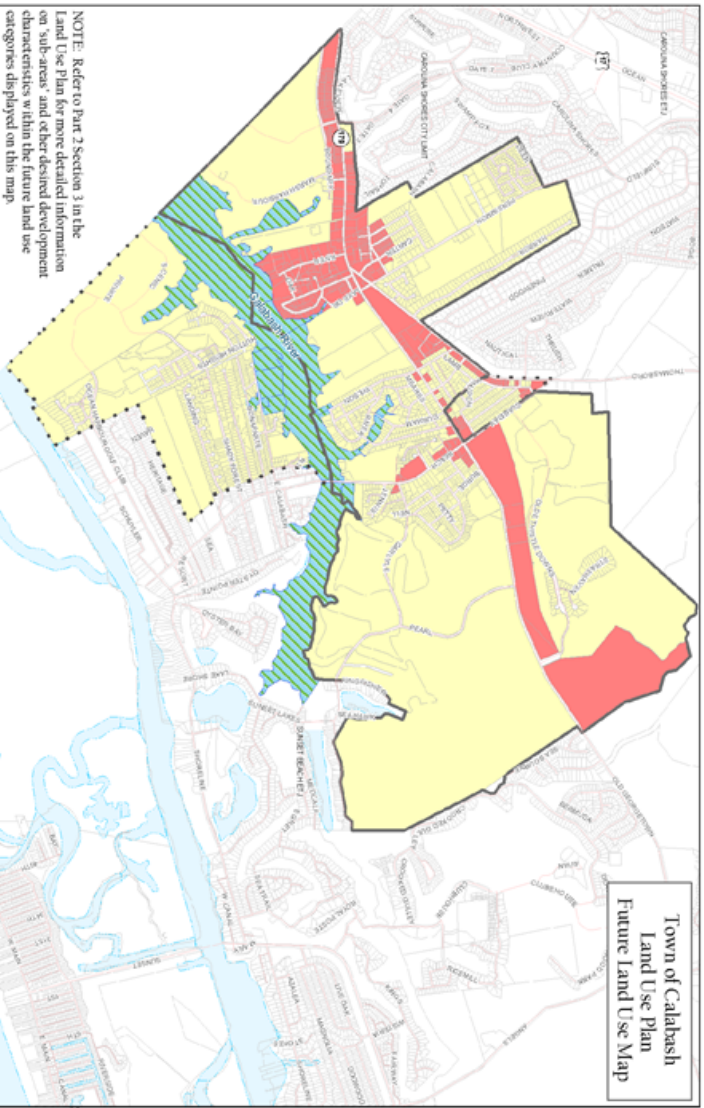


Town of Calabash  
Land Use Plan  
Future Land Use Map



NOTE: Refer to Part 2 Section 3 in the Land Use Plan for more detailed information on 'sub-zones' and other desired development characteristics within the future land use categories displayed on this map.

Map prepared by  
Savannah Coastal Council of Government  
14801 Hunter Drive  
Wilmington, NC 28401  
62020

Map is to be used for general informational purposes only. Spatial data used is general in nature and represents a condition as of a fixed period in time. 100% accuracy of spatial data to current circumstances cannot be guaranteed.

The preparation of this map was financed in part through a grant provided by the North Carolina Coastal Management Program, through funds provided by the Coastal Zone Management Act of 1972, as amended, which is administered by the Office of Ocean and Coastal Resources Management, National Oceanic and Atmospheric Administration.

- Legend**
- Future Land Use Class
  - Residential
  - Business/Heritage and Town Center
  - Conservation
  - Town Limits
  - EIU
  - Roads
  - Parcels